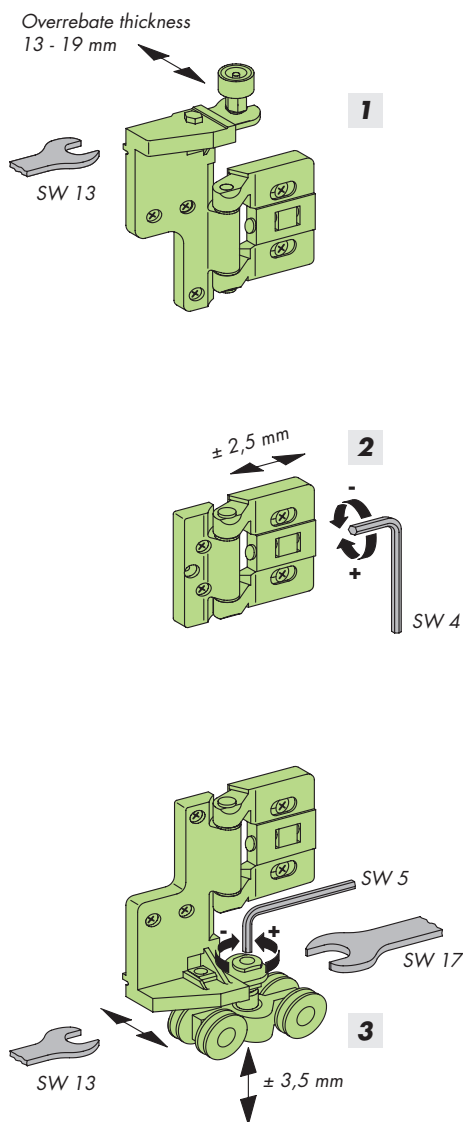


## Adjustments

If required, the variety of adjustments listed below can be used.  
For correct adjustment it is recommended that:

- first install the glass correctly
- the folding sliding elements are clamped horizontal and plumb or the frame is installed into the building



**1**

### Sash pressure via the top hinge

- A** Loosen the lock nut SW13
- B** Firmly press the sash against the frame.
- C** Tighten the locking nut..

**2**

### Positioning of the Sash hinges

*Note:* Slacken sash hinges in order, adjust and re-tighten.

- A** Slacken both setscrews.
- B** Adjust the gap with allen key SW 4 .
- C** Re-tighten setscrews..

**3**

### Setting the height of Bogie wheels

- A** Slacken lock nut SW 17 on the wheels.
- B** Adjust height of sash with 5 mm A/F hexagon socket head key.  
Whilst doing this hold the clamping nut with a 17 mm A/F open ended spanner
- C** Then re-tighten the lock nut SW 17 keeping allen key SW 5 firmly in place.

### Adjustment options of the FAVORIT-Fittings

- Side adjustment through the stay and frame hinges
- Closing pressure in the stay
- Closing pressure and height adjustment in the rebated hinge
- Sash closing pressure from eccentric rollers

see Maintenance instruction FAVORIT Si-line-timber.